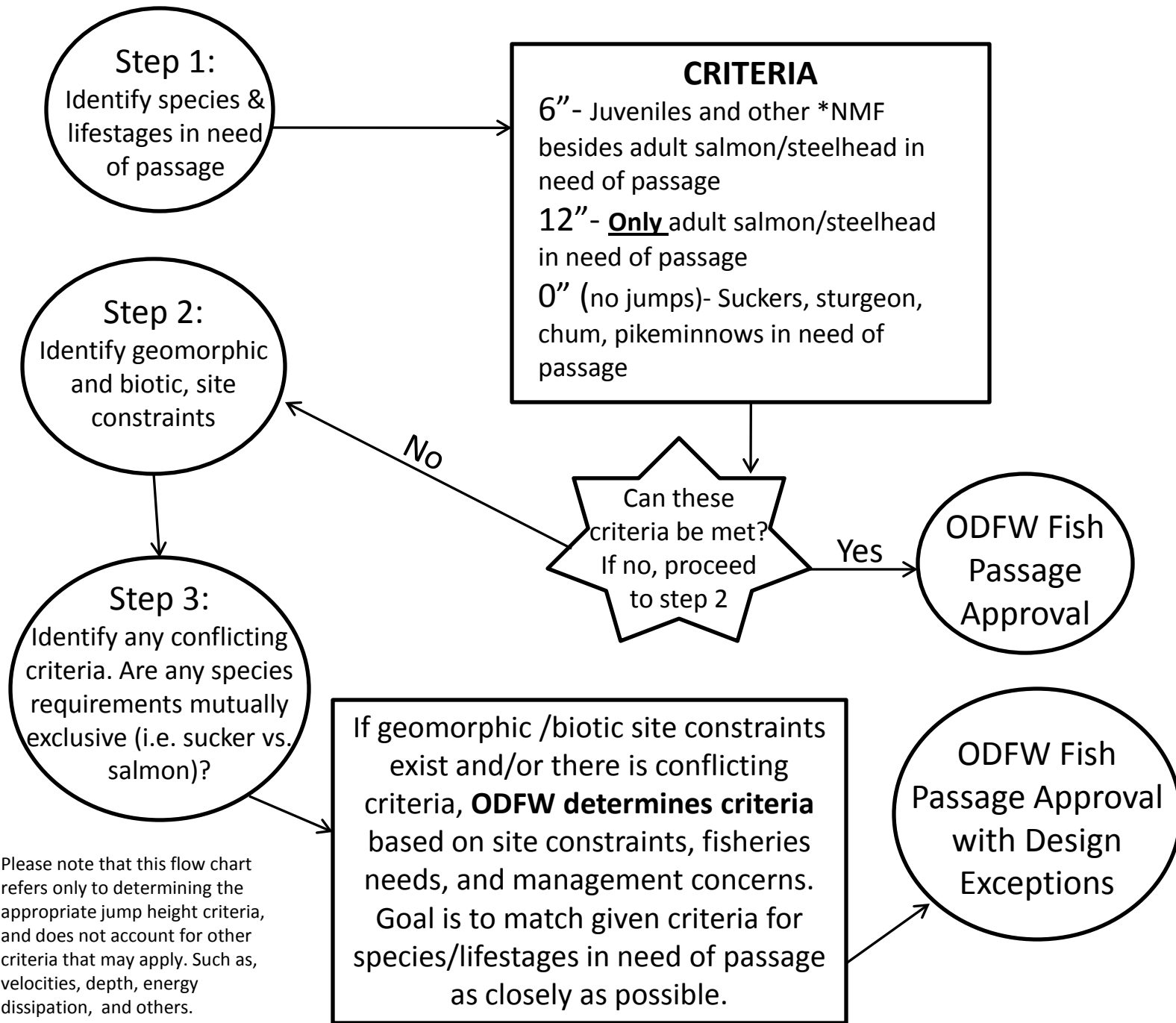


ODFW Jump Height Criteria Decision Process Tree



*NMF= Native Migratory Fish are defined as all native fish that migrate for their life cycle needs. These include trout, salmon, suckers, pikeminnows, sturgeon, lamprey, and others (for complete list please reference Oregon Administrative Rule 635-412-0005).

Please note that this flow chart refers only to determining the appropriate jump height criteria, and does not account for other criteria that may apply. Such as, velocities, depth, energy dissipation, and others.